

How to Select, Specify, & Order A Custom Sloan Sink

Presenters



Shelly Sturgis
Strategic Account Manager – New York
Sloan Valve Company
New York City, NY



Sandi Cooper
Strategic Account Manager – New England
Sloan Valve Company
Boston, MA



Kim Darke-Miller
Strategic Account Manager - Midwest
Sloan Valve Company
Chicago, IL

Agenda

1. Learn the steps required to specify a Sloan sink
2. Understand how each step or selection impacts the price and lead time of a sink
3. Review the language used and how it coordinates in the plumbing schedule
4. Get familiar with Sloan's resources: the people and applications that aid in the specifying process

What we won't cover

1. Current lead times
2. Competitive products



What Commercial Restroom Sinks Used to Look Like...



What's Changed...

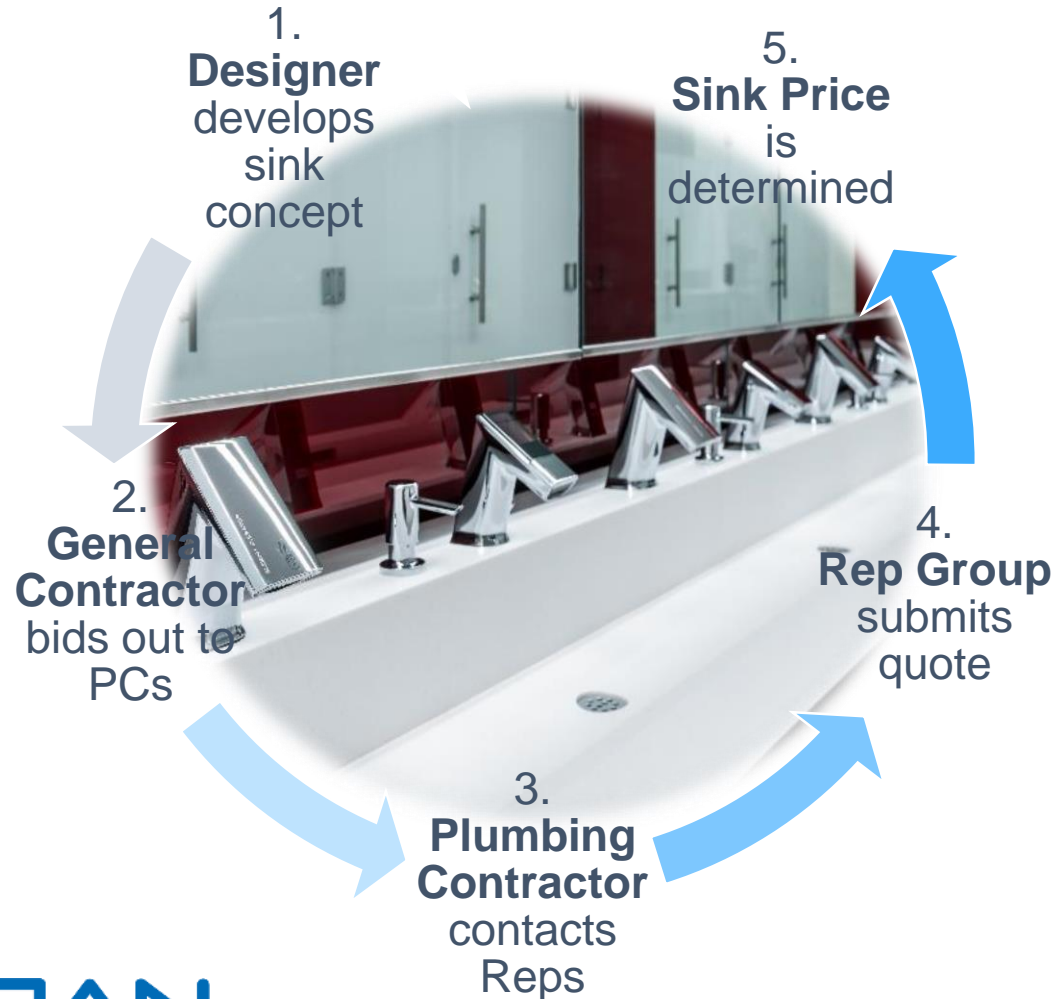
Contractor's punch list



Architect's vision



The Sink Pricing Process... What can go Wrong?



Where things tend to get held up:

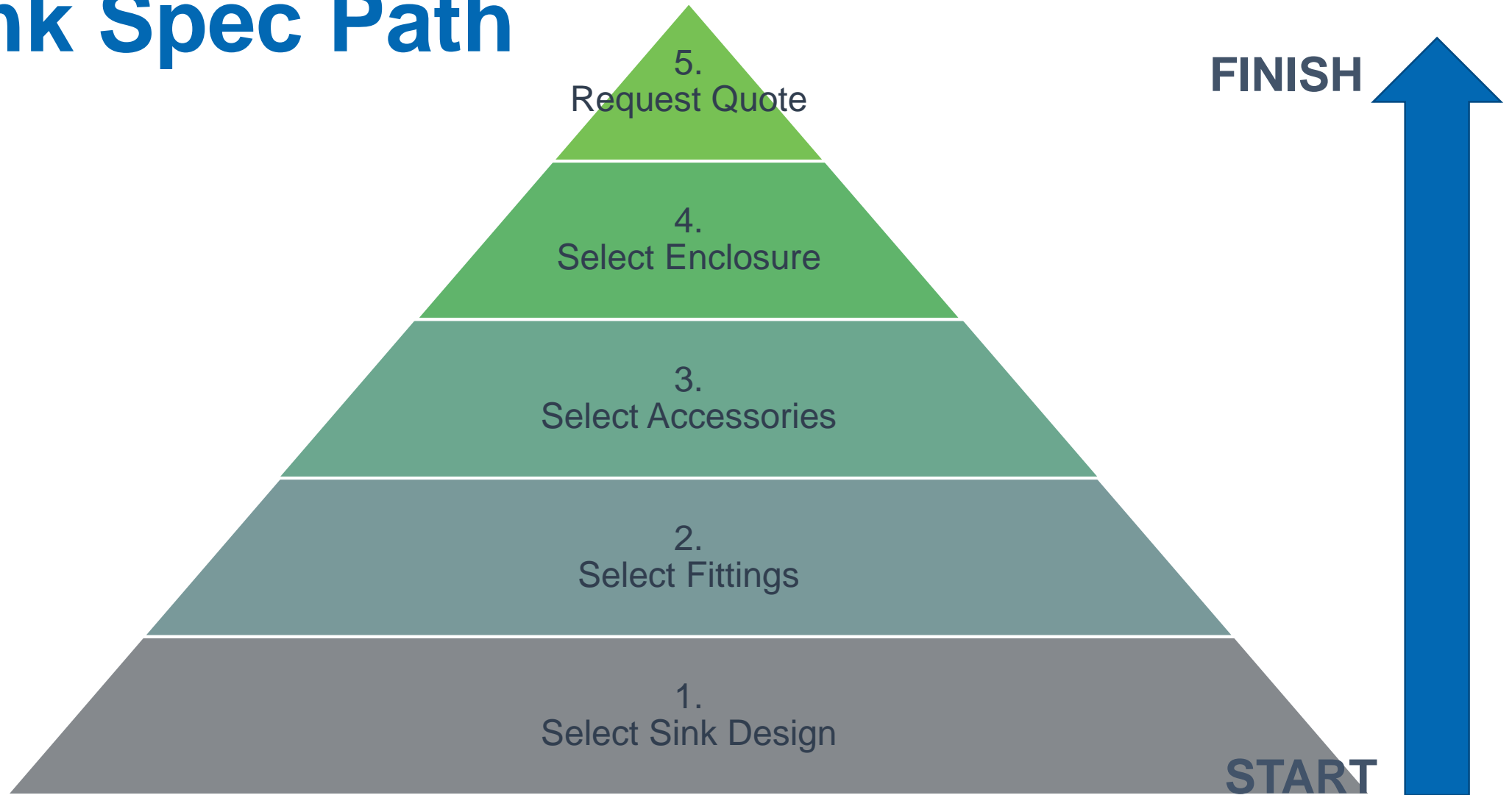
- There's a lack of collaboration
- All details aren't communicated at the onset
- Budget is unclear and design intent is lost

Designer and Sloan SAM or A&D Rep coordination between Steps 1 & 2 is most critical for success

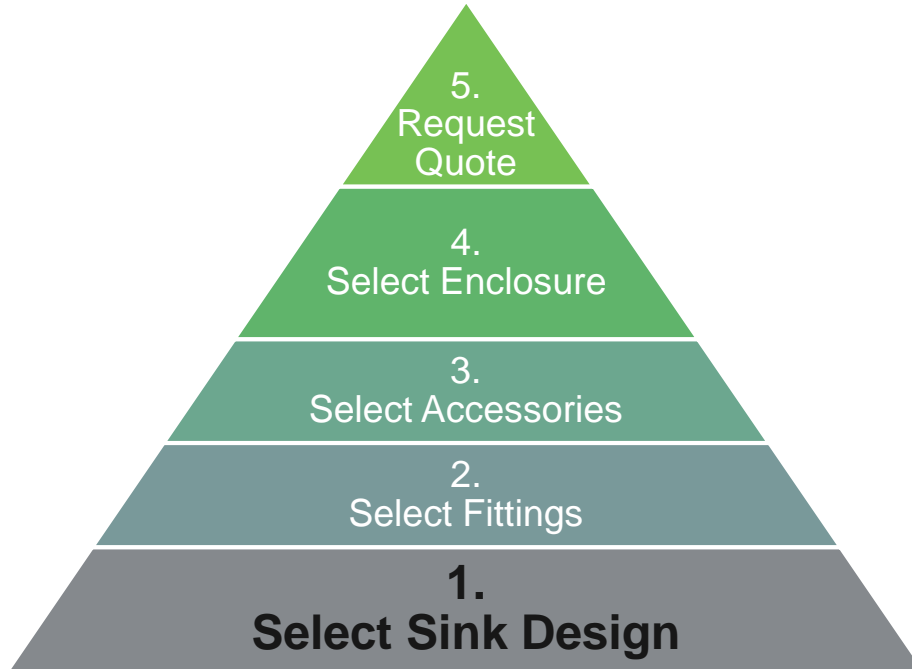
Your Custom Sink Project Steps from Vision to Install



Sink Spec Path



Sink Spec Path



[Link to Sloan Sink Selector](#)



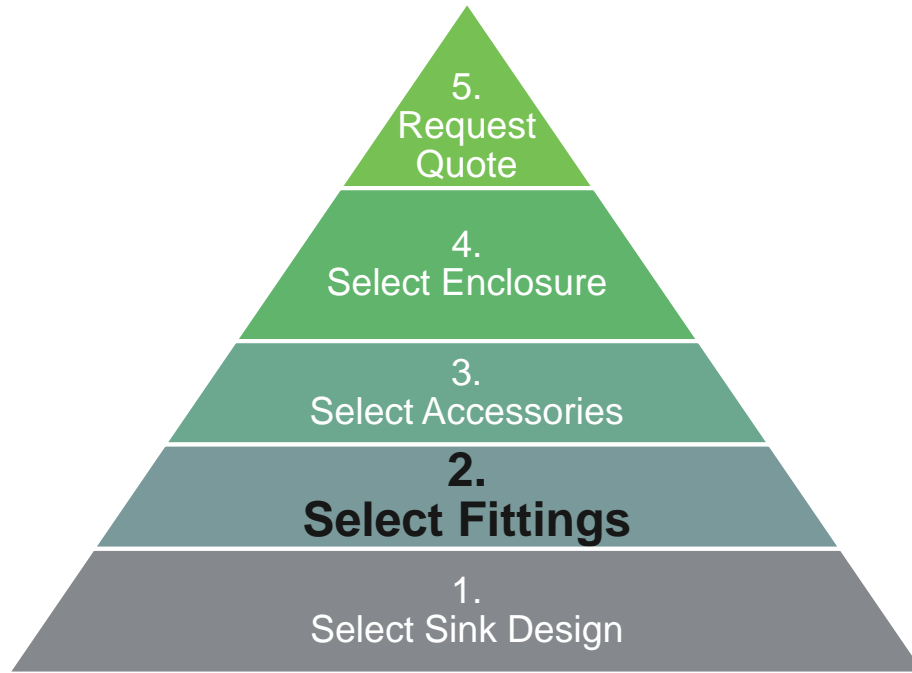
1. Select Sink Design

This is when you want to decide the following...

- Material
- Dimensions
- # of stations



Sink Spec Path



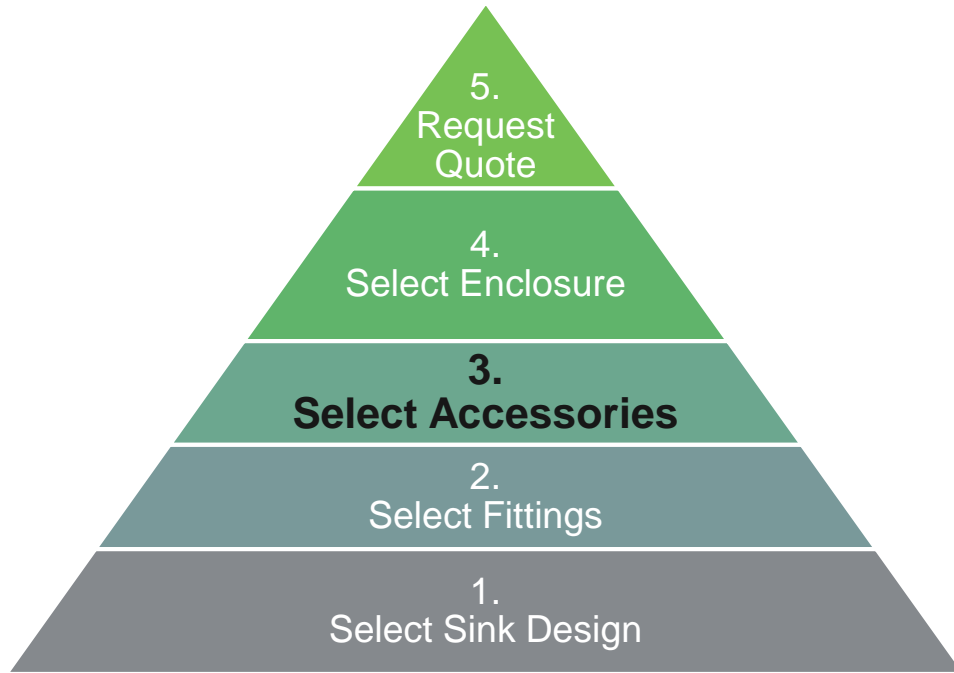
- Power Supply – Battery, Hardwired, or Hybrid?
- Faucet Model – [Link to Sloan Faucet Selector](#)
- Soap Dispenser Model – [Link to Sloan Soap Selector](#)
- Deck Mounted Hand Dryer Model – [Link to AER DEC](#)
- Finish – Chrome or Special PVD – [Link to Finishes](#)



2. Select Fittings



Sink Spec Path



- Paper Towel Holder Model
- Trash Openings
- Baby Changing Station
- Bag Hooks
- Wall Mounted Hand Dryer Model
- LED Lights

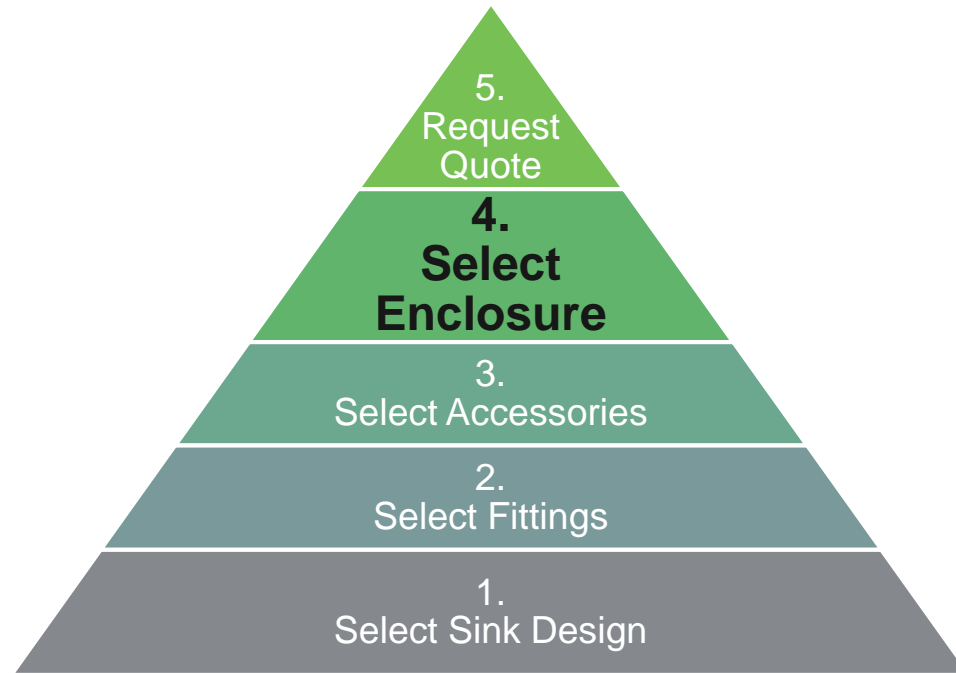


3. Select Accessories

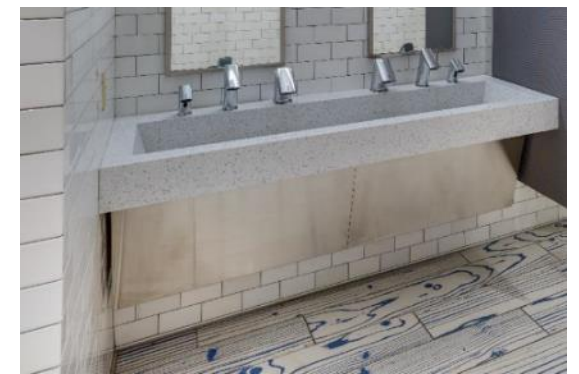
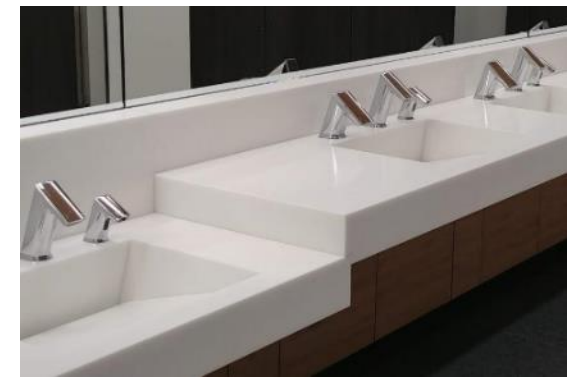


Image courtesy of The Detroit Tigers

Sink Spec Path



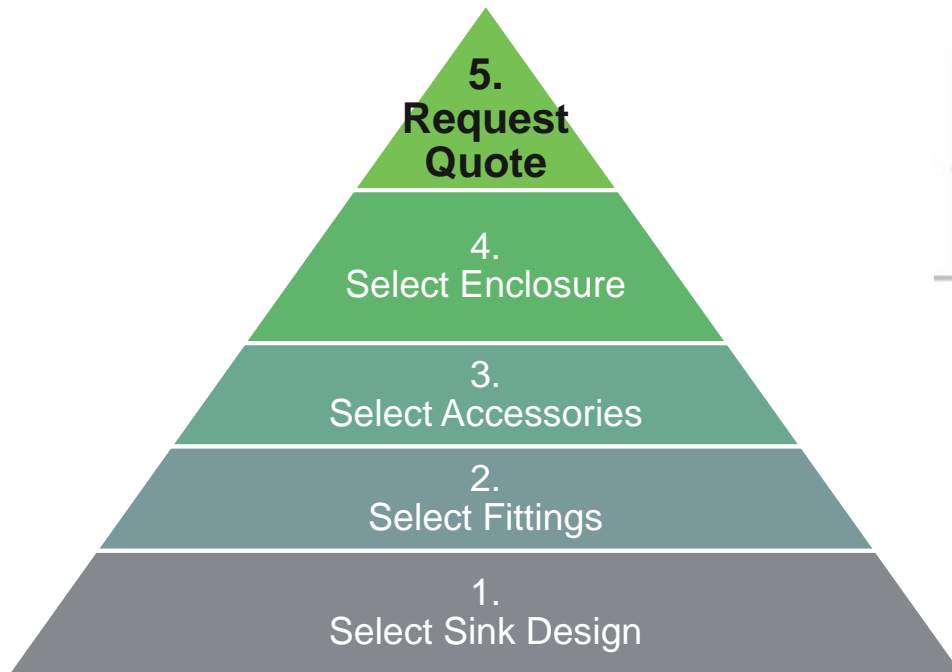
- Cabinet Style
- Angled Stainless Steel
- Vertical Stainless Steel
- Angle Brackets
- Clad Material
- Hook and Hang



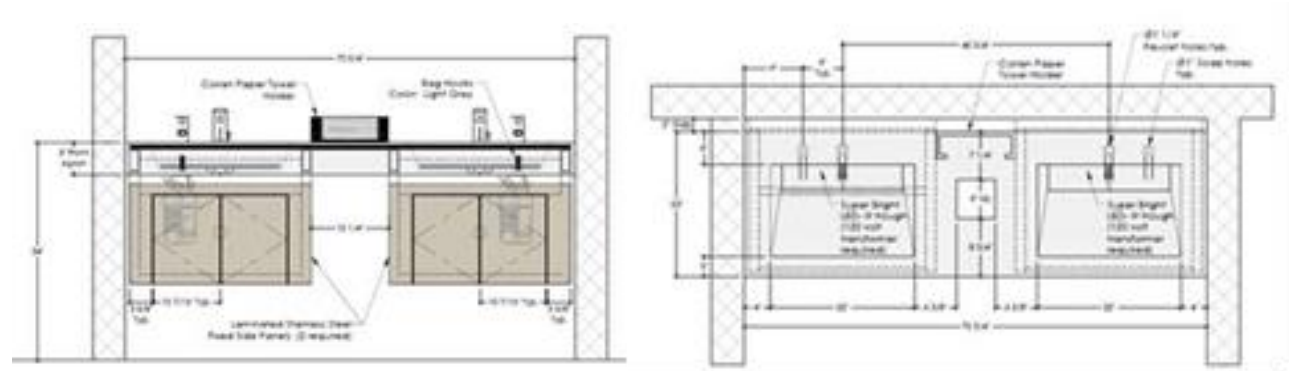
4. Select Enclosure



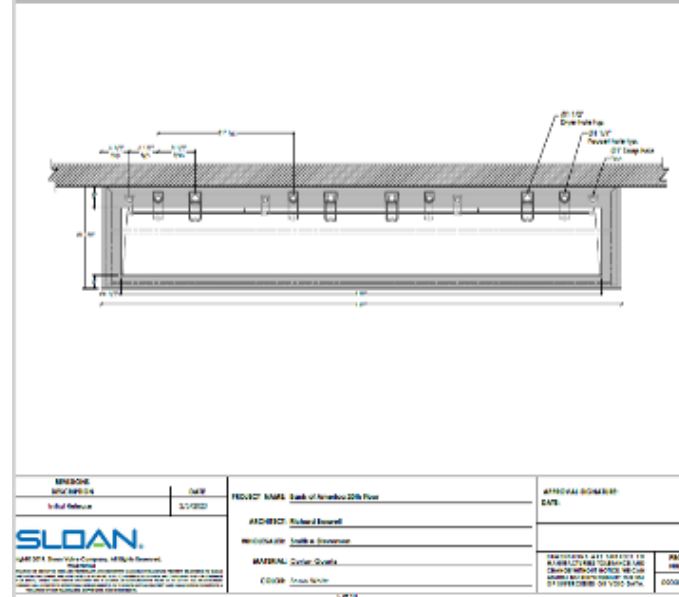
Sink Spec Path



- Reach out to SAM or A&D Rep
- SAM or A&D Rep to complete Architectural Worksheet
- Request budget quote & drawings
- Review budget together
- Sign-off on approved drawings



AD-84000 4-Station Wash Basin, Plan 119"



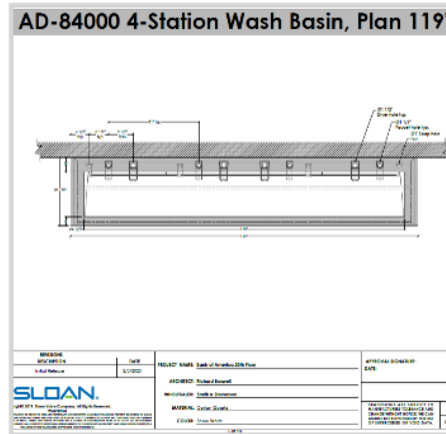
5. Request Quote



Reach out to SAM or A&D Rep

The image shows a software interface titled "SLOAN Sink Configuration Model". It is divided into several sections: "Project Information" with fields for Business, School, and Location; "Sink Information" with numerous dropdown menus for sink type, material, and finish; and "Internal Use Only" with fields for internal model numbers. The interface is designed for configuring a sink to generate a quote.

SAM or A&D Rep to Complete Architectural Worksheet



Request Budget Quote & Drawings



Review Budget Quote together



Sign-off on Approved Drawings

Sink Spec Path

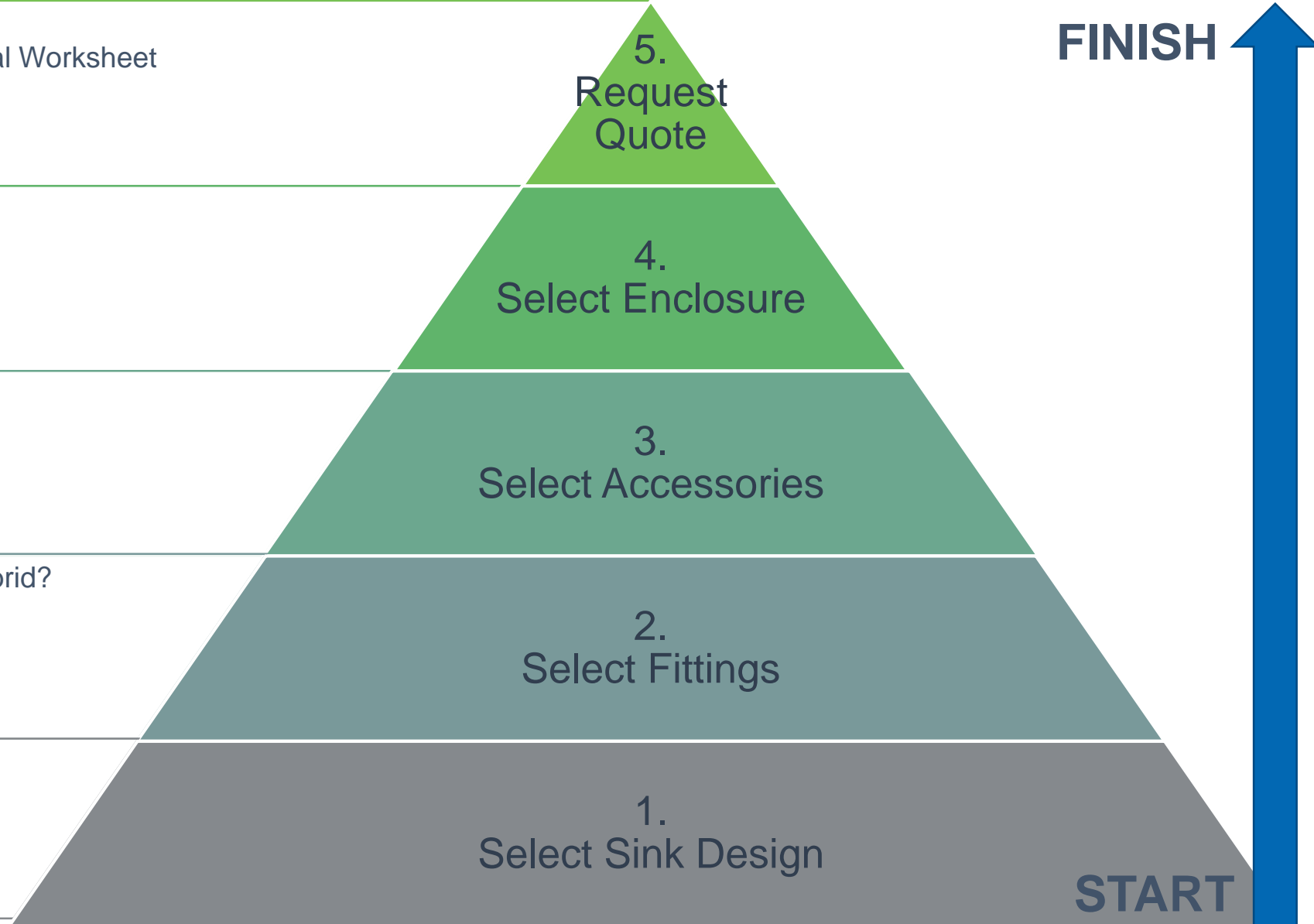
- Reach out to SAM or A&D Rep
- SAM or A&D Rep to complete Architectural Worksheet
- Request budget quote & drawings
- Review budget together
- Sign-off on approved drawings

- Cabinet Style
- Angled Stainless Steel
- Vertical Stainless Steel
- Angle Brackets
- Clad Material

- Paper Towel Holder Model
- Trash Openings
- Baby Changing Station
- Bag Hooks
- Wall Mounted Hand Dryer Model

- Power Supply – Battery, Hardwired or Hybrid?
- Faucet Model
- Soap Dispenser Model
- Deck Mounted Hand Dryer Model
- Finish – Chrome or Special PVD

- Deck - Undermount or Vessel?
- # of Stations – Standard or Custom?
- Basin – Trough or Individual?
- Material – Corian or Quartz?
- Dimension



A modern public restroom with a long white sink vanity, circular mirrors, and a row of urinals. The walls are covered in light-colored subway tiles, and the ceiling has recessed lighting. The vanity is supported by light wood cabinetry. The urinals are also supported by light wood cabinetry. The floor is a neutral color.

Communicating Key Design Details

Three Critical Items to Quote

What needs to be communicated

- What are the overall dimensions? Straight size vs custom
- What is the material and material color? We can wait on color but not material
- What mounting type?

What we usually see

PLUMBING FIXTURE SCHEDULE		
Type Mark	DESCRIPTION	Manufacturer
RESTROOM PLUMBING FIXTURE		
DF	EZHEC IN-WALL BOTTLE FILLING STATION	Elkay Manufacturing
C	DESIGNER SERIES SINK DSG-81000	SLOAN
FL1	ECOS SENSOR FLUSHOMETER	SLOAN
FL2	ECOS SENSOR FLUSHOMETER	SLOAN
FSD	FAUCET & SOAP COMBO	SLOAN
LA	OVAL UNDERMOUNT LAVATORY	SLOAN
UR	SMALL WASHDOWN URINAL	SLOAN
WC	ELONGATED WALL-MOUNTED WATER CLOSET	SLOAN

List Your Rep's Name...

Your local SAM or A&D reps name and number will help expedite the process

PLUMBING FIXTURE SCHEDULE				
Type Mark	DESCRIPTION	Manufacturer	Model	COMMENTS
RESTROOM PLUMBING FIXTURE				
DF	EZH20 IN-WALL BOTTLE FILLING STATION	Elkay Manufacturing	LZWS8K	
FC	DESIGNER SERIES SINK DSG-81000	SLOAN	DSG-81000	
FL1	ECOS SENSOR FLUSHOMETER	SLOAN	ECOS 8111-1.28-OR	
FL2	ECOS SENSOR FLUSHOMETER	SLOAN	ECOS 8186-0.125-1-IN-ST OP-OR	
FSD	FAUCET & SOAP COMBO	SLOAN	ESD-2001-CP	
LA	OVAL UNDERMOUNT LAVATORY	SLOAN	SS-3001	
UR	SMALL WASHDOWN URINAL	SLOAN	SU-7009-CO	
WC	ELONGATED WALL-MOUNTED WATER CLOSET	SLOAN	ST-2459	BEMIS COMMERCIAL PLASTIC ELONGATED TOILET SEAT MODEL #1955CT

Spec Language

- DSG 8X – X = the number of stations you want
 - Choose as many stations as you want
- Choose Corian or quartz
 - Default is Corian
- Choose angle bracket or enclosure –
 - Default is stainless steel enclosure

SLOAN DESIGNER SERIES™ SINK DSG-84000

DESCRIPTION
Designer Series™ 4-Station Wall-Mounted Gradient Sink.

DETAILS

- Material: Corian/Silestone
- Width: 120" (3,048mm)


FEATURES
Four Station Lavatory System with the following features:

- Dimensions: 120" x 22" x 5"
- A monolithic console available in Corian or quartz
- ADA compliant if installed properly
- Multiple mounting options
- Basins can be sized to project requirements
- Many customization options - see architectural worksheet for all options
- Easy installation
- Pairs great with Sloan faucets and soap dispensers




COLORS

- For a complete list of Corian® colors: <http://www.corian.com/-colors-of-corian-r->
- For a complete list of Corian® quartz colors: <http://www.corianquartz.com/-colors-of-zodiaq-r->
- For a complete list of Silestone® quartz colors: <http://www.silestoneusa.com/colors/>

SUGGESTED FAUCETS
This sink is compatible with BASYS® faucets.



COMPLIANCES & CERTIFICATIONS

   IGC156

(ADA Compliant, CUPC Certified, BAA Compliant, IGC156)

RECOMMENDED SPECIFICATION
Sloan Designer Series Sink model no. DSG 8X000 Gradient Style Sink. Product to be fabricated out of Corian or quartz. Sloan automated sensor faucet. Sloan sensor operated foam soap dispenser. Sink design to be ADA compliant and IAPMO certified. Supplied with angle brackets or enclosure.

DOWNLOADS

- DSG-80000 Installation Instructions
- Additional Downloads

NOTES
All information contained within this document subject to change without notice.
Many customization options - see architectural worksheet for all options
Find a compatible faucet for this sink.
Find a matching soap dispenser for this sink.

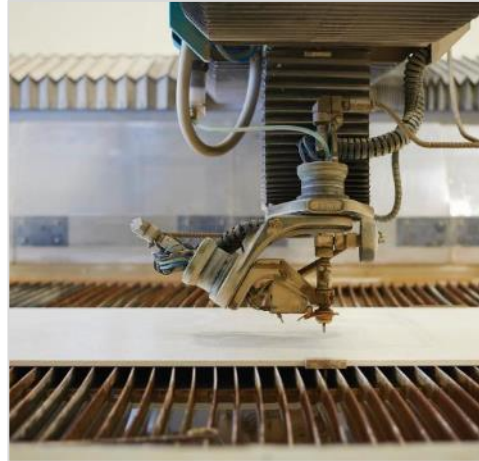
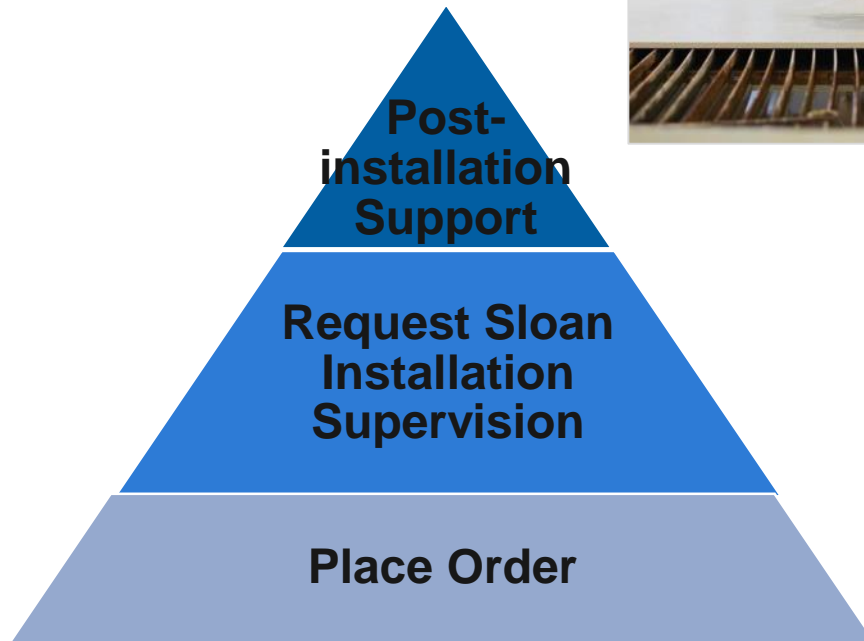
RECOMMENDED SPECIFICATION

Sloan Designer Series Sink model no. DSG 8X000 Gradient Style Sink. Product to be fabricated out of Corian or quartz. Sloan automated sensor faucet. Sloan sensor operated foam soap dispenser. Sink design to be ADA compliant and IAPMO certified. Supplied with angle brackets or enclosure.



Custom Sink Delivery

Sink Delivery Path



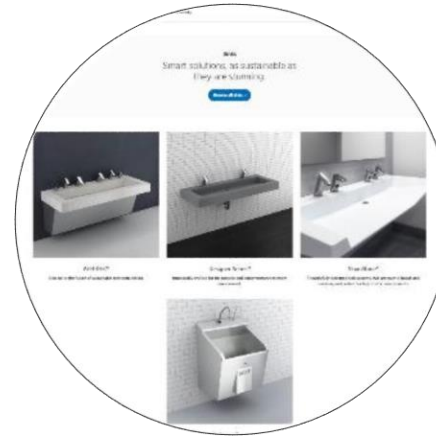
More Support from Sloan



**SAM – Direct Sloan
Rep**



**A&D Rep.
State Specific**



**Online Resources at
Sloan.com**



Tech Support

Sloan Strategic Account Managers (SAMs)



Sandi Cooper – Boston
Mobile: +1 781.704.5587
Sandi.Cooper@sloan.com



Kim Darke-Miller – Chicago
Mobile: +1 773.216.0003
Kim.Darke@sloan.com



Jeff Gilmore – Director
Mobile: +1 224.374.5323
Jeff.Gilmore@sloan.com



Kirk Gruben – Dallas
Mobile: +1 512.658.7459
Kirk.Gruben@sloan.com



Teresa Middleton – San Francisco
Mobile: +1 224.563.9196
Teresa.Middleton@sloan.com



Mary Phelps – Houston
Mobile: +1 832.720.4876
Mary.Phelps@sloan.com



Shelly Sturgis – New York
Mobile: +1 732.535.4940
Shelly.Sturgis@sloan.com



Gina Wilkins – Los Angeles
Mobile: +1 213.670.3024
Gina.Wilkins@sloan.com

Find your local Sloan representative for more information

Sloan Rep Locator tool

- Local code knowledge
- Familiarity with existing sites
- Product knowledge
- Available for onsite consultation

Sloan Customer Care Center

Phone: 800.982.5839

Hours: 7:00 AM - 5:00 PM (CST) Monday – Friday

customer.service@sloan.com

Sloan Technical Support

P: 888.756.2614

F: 800.737.3061

techsupport@sloan.com



J.B. O'Connor Co. – Pittsburgh, PA USA

Summary

Working with your SAM or
A&D Rep

- Streamlines the specification process
- Ensures design intent is realized
- Keeps project on budget



Questions?

Upcoming Sloan Training Webinar



August 27th, 2020

Water Conservation and
Sloan Commercial
Restroom Products

Training Comments, Questions, or Suggestions?

Andrew Warnes
Manager – Technical Training
Sloan Valve Company
10500 Seymour Avenue
Franklin Park, IL USA 60131-1259

Office: +1-800-982-5839
E-mail: training@sloan.com
Web: sloan.com